

IMPORTANT SAFETY INSTRUCTIONS

When using electrical appliances, especially when children are present, basic safety precautions should always be taken, including the following:

READ ALL INSTRUCTIONS BEFORE USING KEEP AWAY FROM WATER

DANGER — Any appliance is electrically live even when the switch is off. To reduce the risk of death by electric shock:

1. **Always unplug appliance immediately after using.**
2. Do not use while bathing or in a shower.
3. Do not place or store appliance where it can fall or be pulled into a tub or sink.
4. Do not place in or drop into water or other liquids.
5. If an appliance falls into water, unplug it immediately. **Do not reach into the water.**

WARNING — To reduce the risk of burns, electrocution, fire, or injury to persons:

1. **This appliance should never be left unattended when plugged in.**
2. This product should not be used by, on, or near children or individuals with certain disabilities. Unsupervised use could result in fire or personal injury.

3. Use this appliance only for its intended use as described in this manual. Do not use attachments not recommended by the manufacturer.

4. **Never operate this appliance if it has a damaged cord or plug, if it is not working properly, if it has been dropped or damaged, or dropped into water. Return the appliance to an authorized service center for examination and repair.**

5. Keep the cord away from heated surfaces.

6. **Do not pull, twist, or wrap line cord around appliance, even during storage.**

7. Never block the air openings of the appliance or place the appliance on a soft surface, such as a bed or couch, where the air openings may be blocked. Keep the air openings free of lint, hair, and the like. Unplug before storing.

8. Never use while sleeping.

9. Never drop or insert any object into any opening or hose.

10. Do not use outdoors or operate where aerosol (spray) products are being used or where oxygen is being administered.

11. Do not use an extension cord with this appliance.

12. This curling iron is hot when in use. Do not touch heated surfaces of the appliance. Use handles or knobs.

13. **Do not place the heated iron directly on any surface or on the appliance power cord while it is hot or plugged in.**

14. This appliance is for household use only.

15. Attachment may be hot during use, allow to cool before handling.

16. **TO AVOID TANGLING, NEVER ROLL THE HAIR AROUND THE HOT BRUSH MORE THAN TWO TIMES.**

SAVE THESE INSTRUCTIONS OPERATING INSTRUCTIONS

This appliance is intended for household use. Use on Alternating Current (60 Hertz) only. Standard appliances are designed to operate at 120 volts AC.

This appliance has a polarized plug (one blade is wider than the other). As a safety feature, this plug will fit in a polarized outlet only one way. If the plug does not fit fully in the outlet, reverse the plug. If it still does not fit, contact a qualified electrician. Do not attempt to defeat this safety feature.

CURLING BASICS

1. Plug the curling iron cord into a standard household electrical outlet (120V). When the red Ready dot on the spoon of the iron turns white, proper styling temperature has been reached.

2. Section dry hair evenly, and comb each section before winding. Pressing the automatic curl release, place curling iron midway up the small section of hair, then spread hair evenly between spoon and barrel. Let go of the automatic curl release to hold hair in place. Gently slide curling iron down to hair ends. To avoid crimped ends, make sure they are securely wound under the spoon in the direction of the desired curl.

3. Wind the hair up as far as you want it curled, being careful not to let the iron touch the scalp. Hold in place 8–12 seconds. For tighter, bouncier curls, roll less hair. For looser, free-flowing curls, roll more hair.

4. To remove curling iron, unwind the hair and press the automatic curl release. To set the curl, do not comb or brush hair until it cools.

5. Some experimenting is necessary when first using the curling iron, or when changing to a different hair style.

FOR TOUSLED HAIR

Create soft, tousled waves by curling each hair section in a random direction. Then, turn head upside down, shake, and gently scrunch hair with fingers. Bring head back to position and repeat for fullest volume.

WIDE WAVES

Pick up a section of hair and place the curling iron under it close to the scalp, making half a turn downward. Remove the curling iron. Working with the same hair section, start where you left off and place the curling iron on top of the hair, curling it up half a turn. Proceed down the same hair section, alternating the curl upward and downward. Repeat procedure with remaining sections of hair. For best results, hair should be about 6–8 inches long.

HOT BRUSH BASICS

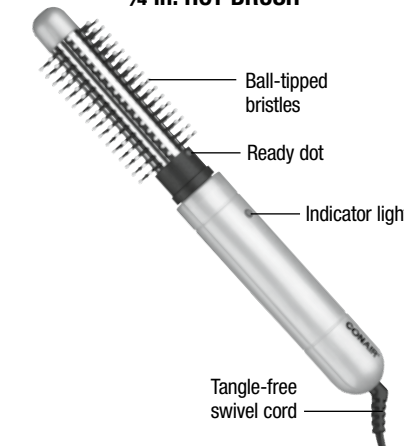
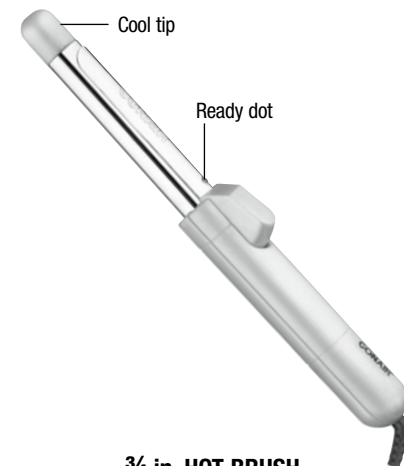
1. Plug the hot brush cord into a standard household electrical outlet (120V). Red indicator light will go on. When the red Ready dot turns white, proper styling temperature has been reached.

2. Use of the hot brush is very easy to master. Roll one small section of hair at a time around the hot brush starting from the bottom up. **TO AVOID TANGLING, NEVER ROLL THE HAIR AROUND THE HOT BRUSH MORE THAN TWO TIMES.** When hair is warm (not hot) to the touch, the curl is set. For hair that is harder to curl, leave the hot brush in place a little longer. A hot brush generally gives a lighter curl than a curling iron — for very hard-to-curl hair, try switching to your curling iron.

3. The hot brush can be used for quick touch-ups without shampooing. After heating the hot brush, simply brush the hair back to its original style.

To change the style, mist the hair lightly with water to slightly dampen before using the hot brush. No combing is necessary!

GET TO KNOW YOUR CURLS 'N CURLS® IRONS



CURLS 'N CURLS® ARE AVAILABLE
IN THESE SIZES:

5/8 in.

Curling Iron - Model CD11JBC

3/4 in.

Curling Iron - Model CD10JBC

1 in.

Curling Iron - Model CD12JBC

3/4 in.

Styling Brush - Model BC40JBC

USER MAINTENANCE

Your curling iron is virtually maintenance free. No lubrication is needed. Keep all vents and openings clear of dirt and dust. If cleaning becomes necessary, disconnect the curling iron from the power source, allow it to cool and wipe exterior with a cloth. If any abnormal condition occurs, unplug the curling iron, allow it to cool, and return it for repair to an authorized service center only. No repairs should be attempted by the consumer.

CAUTION

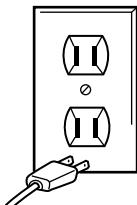
NEVER allow the power supply cord to be pulled or twisted. Never wrap the cord around the curling iron. Damage will occur at the high flex point of entry into the curling iron, causing it to rupture and short circuit. Inspect the cord frequently for damage. Stop use immediately if damage is visible or if unit stops or operates intermittently.

STORAGE

When not in use, your appliance should be disconnected, allowed to cool and stored in a safe, dry location out of reach of children. Do not jerk or strain cord at plug connections. Do not wrap the line cord around the appliance. Allow the cord to hang or lie loose and straight at the point of entry into the appliance.

**WARNING:
IF YOU THINK
THE POWER IS OFF
WHEN THE SWITCH
IS OFF,
YOU'RE WRONG.**

KEEP AWAY FROM WATER



Everyone knows that electricity and water are a dangerous combination. But did you know that an electric appliance is still electrically live even if the switch is off? If the plug is in the power is on. So when you are not using your appliances, keep them unplugged.

**ALWAYS UNPLUG
SMALL APPLIANCES**

LIMITED ONE-YEAR WARRANTY

Conair will repair or replace, at our option, your appliance free of charge for 12 months from the date of purchase if the appliance is defective in workmanship or materials.

To obtain service under this warranty, return the defective product to the service center listed on back, together with your sales slip and \$7.50 for postage and handling. California residents need only provide proof of purchase and should call 1-800-3-CONAIR for shipping instructions. In the absence of a receipt, the warranty period shall be 12 months from the date of manufacture.

ANY IMPLIED WARRANTIES, OBLIGATIONS, OR LIABILITIES, INCLUDING BUT NOT LIMITED TO THE IMPLIED WARRANTY OF MERCHANTABILITY AND FITNESS FOR A PARTICULAR PURPOSE, SHALL BE LIMITED IN DURATION TO THE 12-MONTH DURATION OF THIS WRITTEN, LIMITED WARRANTY. Some states do not allow limitations on how long an implied warranty lasts, so the above limitations may not apply to you.

IN NO EVENT SHALL CONAIR BE LIABLE FOR ANY SPECIAL, INCIDENTAL, OR CONSEQUENTIAL DAMAGES FOR BREACH OF THIS OR ANY OTHER WARRANTY, EXPRESS OR IMPLIED, WHATSOEVER. Some states do not allow the exclusion or limitation of special, incidental, or consequential damages, so the above limitation may not apply to you.

This warranty gives you specific legal rights, and you may also have other rights, which vary from state to state.

Please register this product at:
www.conair.com/registration

For info on any Conair product call: **1-800-3-CONAIR** or visit us on the web at: www.conair.com

Service Center
Conair Corporation
Service Department
7475 N. Glen Harbor Blvd.
Glendale, AZ 85307

©2014 Conair Corporation
150 Milford Road, East Windsor, NJ 08520
7475 N. Glen Harbor Blvd., Glendale, AZ 85307

14PA003924

IB-8162E

Curls 'n curls®



For your safety and continued enjoyment of this product, always read the instruction book carefully before using.

CONAIR®

STYLING IRONS

Models CD10JBC, CD11JBC,
CD12JBC, BC40JBC