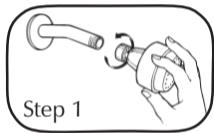


Pollenex[®]

Installs in 2 Easy Steps

Step 1: Remove the old showerhead by turning it counterclockwise. Wipe off any debris from the threaded pipe. Wrap the supplied teflon tape clockwise around the threaded pipe.



Step 2: Install the showerhead by turning it clockwise, then tighten by hand. If additional tightening is required, place protective cloth on the swivel nut and tighten with a wrench.

