

# IMPORTANT SAFETY INSTRUCTIONS

When using electrical appliances, especially when children are present, basic safety precautions should always be followed, including the following:

## READ ALL INSTRUCTIONS BEFORE USING KEEP AWAY FROM WATER

**DANGER** — Any appliance is electrically live even when the switch is off. To reduce the risk of death by electric shock:

1. **Always unplug appliance immediately after using.**
2. Do not use while bathing or in a shower.
3. Do not place or store appliance where it can fall or be pulled into a tub or sink.
4. Do not place in, or drop into water or other liquids.
5. If an appliance falls into water, unplug it immediately. **Do not reach into the water.**

**WARNING** — To reduce the risk of burns, electrocution, fire, or injury to persons:

1. **This appliance should never be left unattended when plugged in. Do not pull, twist, or wrap line cord around appliance.**
2. This appliance should not be used by, or near children or individuals with certain disabilities. Unsupervised use could result in fire or personal injury.
3. Use this appliance only for its intended

use as described in this manual. Do not use attachments not recommended by the manufacturer.

4. **Never operate this appliance if it has a damaged cord or plug, if it is not working properly, if it has been dropped or damaged, or dropped into water. Return the appliance to an authorized service center for examination and repair.**

5. Keep the cord away from heated surfaces.
6. Never block the air openings of the appliance or place on a soft surface, such as a bed, couch, or towel, where the air openings may be blocked. Keep the air openings free of lint, hair, and the like.
7. Never use while sleeping.
8. Never drop or insert any object into any opening or hose.
9. Do not use outdoors or operate where aerosol (spray) products are being used or where oxygen is being administered.
10. Do not use an extension cord with this appliance.
11. This iron is hot when in use. Do not touch heated surfaces of the appliance. Use handles or knobs. Do not let heated surfaces come into contact with eyes or bare skin.
12. **Do not place the heated iron directly on any surface or on the appliance power cord while it is hot or plugged in. Use stand provided.**
13. Do not operate with a voltage converter.
14. Do not attempt to touch the housing of your appliance near the barrel, as it is hot when in use.
15. This appliance is not a toy. Keep away from children

# SAVE THESE INSTRUCTIONS OPERATING INSTRUCTIONS

This appliance is intended for household use. Use on Alternating Current (60 hertz) only. Standard appliances are designed to operate at 120 volts AC.

This appliance has a polarized plug (one blade is wider than the other). As a safety feature, this plug will fit in a polarized outlet only one way. If the plug does not fit fully in the outlet, reverse the plug. If it still does not fit, contact a qualified electrician. Do not attempt to defeat this safety feature.

**NOTE: Do not use this styling appliance on hair extensions.**

## GETTING STARTED

Plug the styler's cord into any household outlet (120V). The unit will take 15–20 minutes to heat up. The ready dot will let you know when it is ready to begin styling. You can adjust the temperature to high or low depending upon your hair type and styling needs. Never leave your styler on and unattended.

## CERAMIC TECHNOLOGY

The styler's non-stick, static-free ceramic coating provides high, even heat for less damage and gives the hair a smooth, silky shine; while reducing frizz and flyaways.

## HOW TO CHANGE STYLING HEADS

The styler's multi-attachment feature is designed to provide you with styling versatility for all hair textures. Your combo styler unit includes a ¾-inch curling iron and straightener/crimper plates – different styling options with one tool.

Changing styling heads is easy.

1. Make sure appliance is unplugged and cool.
2. Turn locking dial to the right to unlock.
3. Pull attachment straight off.
4. To put new attachment on power handle, make sure counter rest faces in opposite direction of switch and light.
5. Push attachment into power handle.
6. Turn locking dial to the left to lock securely in place.

## CURLING BASICS

1. Section dry hair evenly, and comb each section before styling. To curl, press the curl release, place curling iron midway up the hair section, then spread hair evenly between spoon and barrel. Release automatic curl release to hold hair in place. Gently slide the curling iron down to hair ends. To avoid crimped ends, make sure they are securely wound under the spoon in the direction of the desired curl.
2. Wind the hair up as far as you want it curled, being careful not to let the curling iron touch the scalp. Hold in place for 8–12 seconds, depending on the texture and length of your hair. For tighter, bouncier curls, roll less hair. For looser, free-flowing curls, roll more hair.
3. To remove curling iron, press the automatic curl release and unwind the hair. To set the curl, do not comb or brush hair until it cools.

## TO STRAIGHTEN HAIR

To straighten hair, use straightener styling plates. Start with a hair section that is 1 inch wide and no more than ½ inch thick. Open the plate and place a hair section between the two hot plates close to your scalp. Trap hair between plates by firmly squeezing the handles together. While maintaining the tension, slowly pull the unit down along the hair section toward end. At the end of the hair section, release the pressure on the handle and allow the hair to slide out. Continue this process on additional sections of hair until you achieve the hair style you desire.

For extra styling, turn the straightening iron under when nearing the end of the hair section. This will give a nice flip to your hair.

Some practice is necessary when first using this straightening iron. After a few uses, you will learn the ideal way to straighten and style your hair easily.

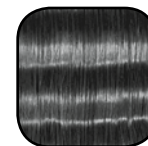


## TO CRIMP HAIR

To create fun, trendy crimp styles, use the crimper plates. Start with a hair section that is 1 inch wide and no more than ½ inch thick. Open the plates and place hair between the two hot plates close to your scalp. Squeeze the handles together firmly to trap hair between the plates. Hold for 5–10 seconds and release. Move styler down, overlapping previous crimp, and crimp again.

Continue this process on additional sections of hair until you achieve the style you desire.

Some practice is necessary when first using this crimping iron. After a few uses, you will learn the ideal way to easily crimp and style your hair.



## TO WAVE HAIR

For flowing waves, use curling iron. Separate a wider section of hair than you normally do for curling, and roll it as you usually do. For best results, hair should be at least 6–8 inches long.

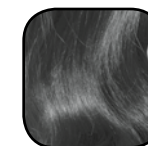
## FOR TOUSLED HAIR

Create soft, tousled waves by curling each hair section in a random direction. Then, turn head upside down, shake, and gently scrunch hair with fingers. Bring head back to position and repeat for fullest volume.



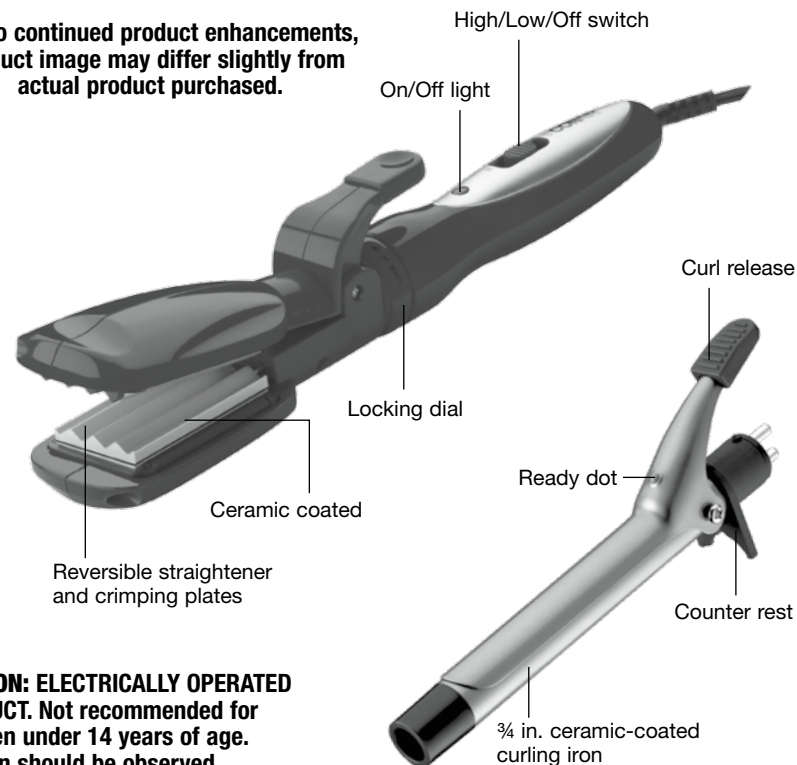
## WIDE WAVES

Pick up a section of hair and place the curling iron under it, close to the scalp, making half a turn downward. Remove the curling iron. Working with the same hair section, start where you left off and place the curling iron on top of the hair, curling it up half a turn. Proceed down the same hair section, alternating the curl upward and downward. Repeat procedure with remaining sections of hair. For best results, hair should be about 6–8 inches long.



## GET TO KNOW YOUR STYLING IRON

Due to continued product enhancements, product image may differ slightly from actual product purchased.



**CAUTION: ELECTRICALLY OPERATED PRODUCT.** Not recommended for children under 14 years of age. Caution should be observed during handling and use to prevent electric shock.

**WARNING:** The unit will get very hot within 15–20 minutes and should not come into contact with the skin when it is turned on.

## USER MAINTENANCE

Your iron is virtually maintenance free. No lubrication is needed. Keep all vents and openings clear of dirt and dust. If cleaning becomes necessary, disconnect the curling iron from the power source and wipe exterior with a cloth. If any abnormal condition occurs, unplug the iron, allow it to cool, and return it for repair to an authorized service center only. No repairs should be attempted by the consumer.

### CAUTION

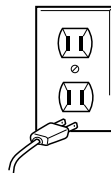
NEVER allow the power supply cord to be pulled or twisted. Never wrap the cord around the iron. Damage will occur at the high flex point of entry into the iron, causing it to rupture and short. Inspect the cord frequently for damage. Stop use immediately if damage is visible or if unit stops or operates intermittently.

### STORAGE

When not in use, your appliance should be disconnected, allowed to cool and stored in a safe, dry location out of reach of children. Do not jerk or strain cord at plug connections. Do not wrap the line cord around the appliance. Allow the cord to hang or lie loose and straight at the point of entry into the appliance.

**WARNING:  
IF YOU THINK THE  
POWER IS OFF WHEN  
THE SWITCH IS OFF,  
YOU'RE WRONG.**

**KEEP AWAY FROM WATER**



Everyone knows that electricity and water are a dangerous combination. But did you know that an electric appliance is still electrically live even if the switch is off? If the plug is in, the power is on. So when you are not using your appliances, keep them unplugged.

**ALWAYS UNPLUG  
SMALL APPLIANCES**

## LIMITED ONE-YEAR WARRANTY (U.S. AND CANADA ONLY)

Conair will repair or replace, at our option, your appliance free of charge for 12 months from the date of purchase if the appliance is defective in workmanship or materials.

To obtain service under this warranty, return the defective product to the service center listed on back, together with your sales slip and \$7.50 for postage and handling. California residents need only provide proof of purchase and should call 1-800-3-CONAIR for shipping instructions. In the absence of a receipt, the warranty period shall be 12 months from the date of manufacture.

**ANY IMPLIED WARRANTIES, OBLIGATIONS, OR LIABILITIES, INCLUDING BUT NOT LIMITED TO THE IMPLIED WARRANTY OF MERCHANTABILITY AND FITNESS FOR A PARTICULAR PURPOSE, SHALL BE LIMITED IN DURATION TO THE 12-MONTH DURATION OF THIS WRITTEN, LIMITED WARRANTY.**

Some states do not allow limitations on how long an implied warranty lasts, so the above limitations may not apply to you.

**IN NO EVENT SHALL CONAIR BE LIABLE FOR ANY SPECIAL, INCIDENTAL, OR CONSEQUENTIAL DAMAGES FOR BREACH OF THIS OR ANY OTHER WARRANTY, EXPRESS OR IMPLIED, WHATSOEVER.** Some states do not allow the exclusion or limitation of special, incidental, or consequential damages, so the above limitation may not apply to you. This warranty gives you specific legal rights, and you may also have other rights, which vary from state to state.

**combostyler**  
multiple styles, one tool



Please register this product at:  
[www.conair.com/registration](http://www.conair.com/registration)

### SERVICE CENTER

CONAIR CORPORATION  
Service Department  
7475 N. Glen Harbor Blvd.  
Glendale, AZ 85307

For information on any Conair product, call 1-800-3-CONAIR or visit us on the web at: [www.conair.com](http://www.conair.com)

©2018 Conair Corporation  
150 Milford Road, East Windsor, NJ 08520  
7475 N. Glen Harbor Blvd., Glendale, AZ 85307

### Instruction & Styling Guide

For your safety and continued enjoyment of this product, always read the instruction book carefully before using.

**CONAIR**

Model CB600 – All Versions

18PA054598

IB-13419A