

Welcome to Your All-in-One Sonic Water Jet System

This innovative new all-in-one system from Conair enhances oral hygiene while significantly contributing to healthy gums when used as part of a responsible oral health management program.

The Interplak Difference

The Interplak® All-in-One Sonic Water Jet System by Conair is designed to help you improve and maintain the highest level of oral hygiene quickly and easily, right at home. This integrated system gently and effectively cleans and flushes food debris from hard-to-reach places – around orthodontic appliances, fixed and removable bridgework, crowns, splints and implants – and provides valuable gum massage with every use.

Benefits of Sonic Technology

Your Interplak® All-in-One Sonic Water Jet System by Conair is the only water jet with sonic vibrating action. All-in-one sonic technology provides enhanced brushing, flossing and massage, all in one system. The simultaneous sonic vibration and water pulsation greatly expand the performance of the dental water jet, offering a unique and complete cleaning experience and providing the ultimate in oral care.

IMPORTANT SAFEGUARDS

When using electrical products, especially when children are present, basic safety precautions should always be followed, including the following:

READ ALL INSTRUCTIONS BEFORE USING

DANGER – To reduce the risk of electrocution:

1. Always unplug after use. This sonic water jet system should never be left unattended when plugged in.
2. Do not place or store the unit where it can fall or be pulled into the tub, sink or toilet.
3. Do not immerse unit in water or any other liquid.
4. **Do not reach for a unit that has fallen into water. Unplug immediately.**
5. Do not reach into water under any circumstance. Have the unit checked by an Authorized Service Center after it has been immersed in water.

WARNING – To reduce the risk of burns, electrocution, fire, or injury:

1. Do not use while bathing.
2. Do not handle with wet hands.
3. The unit is designed for use with 120V AC.
4. **Never operate the unit if it has a damaged power cord, if it is not working properly, if it has been dropped or damaged or if it has been immersed in liquids.**
5. Do not excessively bend or pull the power cord. Unplug the unit by grasping the plug – not the power cord.
6. Keep the power cord away from heated surfaces.
7. Close supervision is necessary when this product is used on or by children or disabled persons.
8. Use this product only for its intended use as described in this manual or recommended by your dental professional.
9. Do not direct water under the tongue, into the ear, nose or other delicate areas. This product can produce pressures that can damage sensitive areas. See Recommended Technique for correct usage.
10. Never block the air openings of the sonic water jet or place it on a soft surface, such as a bed or couch, where the air openings may be blocked. Keep the air openings free of lint, hair, and the like.
11. Never drop or insert any object into any opening or into the hose.
12. Fill reservoir with lukewarm water only unless otherwise specified by your dental professional. Do not overfill.
13. Only use attachments recommended by Interplak.
14. Never use while drowsy.
15. Never operate where oxygen or aerosol sprays are being used.
16. For household use only. Do not use outdoors.
17. This appliance has a polarized plug (one blade is larger than the other). As a safety feature, this plug will fit in a polarized outlet only one way. If the plug does not fit fully into outlet, reverse the plug. If it still does not fit, contact a qualified electrician. Do not attempt to defeat this safety feature.
18. This appliance is not a toy. Keep away from children.

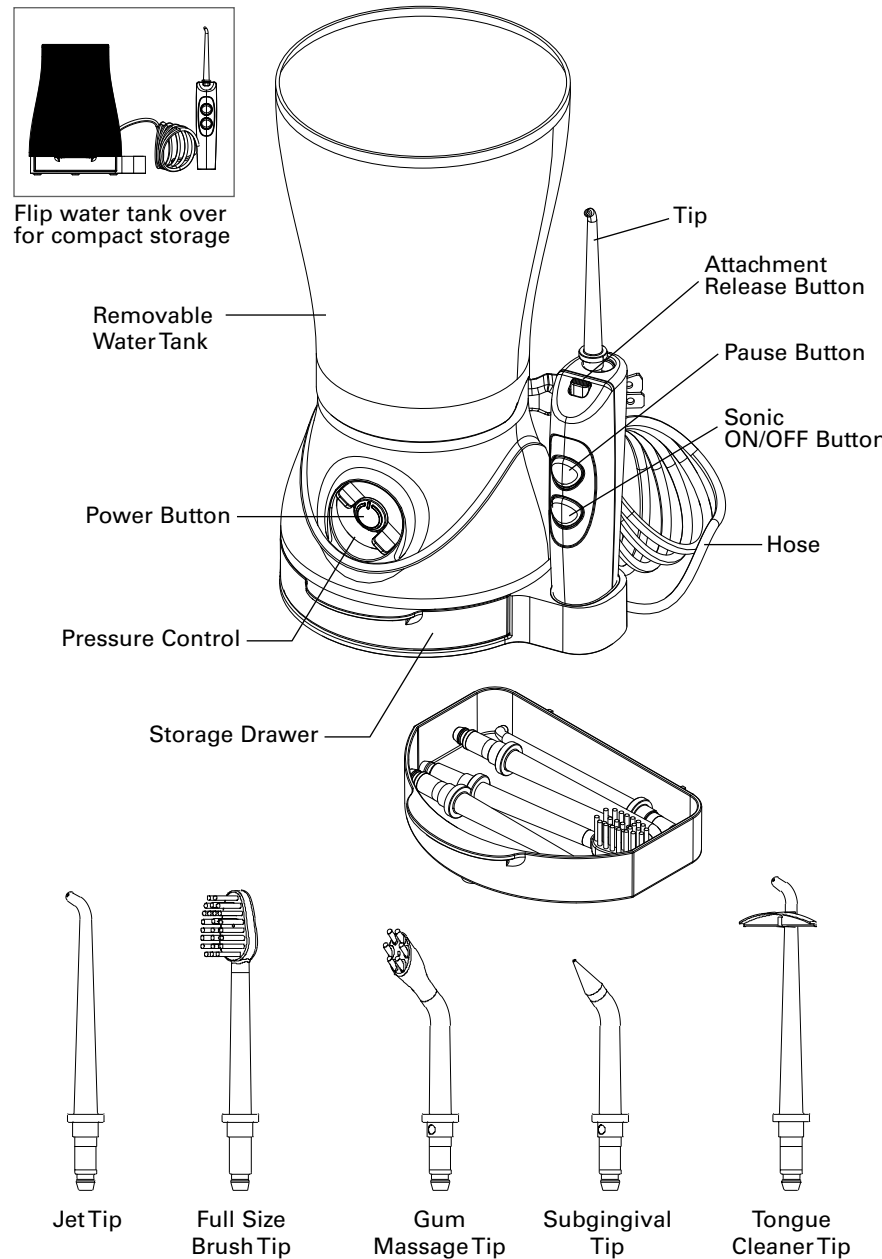
SAVE THESE INSTRUCTIONS

MEDICAL WARNING – For your safety:

1. If you have had oral or periodontal surgery in the past 12 months, contact your dentist prior to use.
2. When you start any new oral hygiene program, your gums may initially bleed slightly. Contact your dentist if excessive bleeding occurs or if the slight bleeding continues after two weeks of use.
3. Do not use mouthwashes or rinses that contain iodine, bleach or tree oil.
4. Do not use while wearing oral jewelry. Remove prior to use.
5. Do not use if you have an open wound on your tongue or in your mouth.
6. If your physician or cardiologist has advised you to receive antibiotic premedication before a dental procedure, you should consult your dentist before using this oral hygiene aid.
7. Closely instruct and supervise children and individuals with special needs about proper use and prevent them from playing with this appliance.
8. Do not remove the flexible tip on either the massage or the subgingival attachments. If it separates for any reason, discard both the tip and shaft and replace them with new attachments.
9. Be sure that only the water jet tips touch your teeth, gums or tongue. Damage to those areas may occur if any other part of the handle touches them.
10. Use only for oral hygiene cleaning. Do not use for any other purpose.
11. As with any new oral hygiene program, individuals with heart problems should check with their physician prior to using the Interplak Sonic Water Jet System.

WARNING: Changes or modifications to this unit not expressly approved by Interplak will void the warranty. Servicing should always be referred to an authorized service center.

Interplak® All-in-One Sonic Water Jet System Diagram

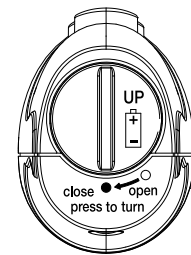


Getting Started

Battery Installation

Follow these instructions to install battery.

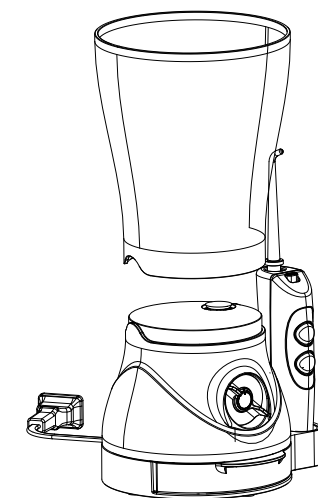
Use a coin to turn bottom cap counterclockwise to Open position; remove cap.



Install one AAA battery (included) with the + facing up. Replace the cap and turn clockwise to Closed position.

Filling the Water Tank

Remove the water tank from the base and fill with lukewarm water. Put the tank back on base and press down firmly to seat it.



Inserting and Removing Tips

Select the desired tip and push it firmly into place on the handle. To remove, press release button and pull off tip.

Priming the Water Jet

On first use, or if the unit has not been used for a while, the water jet needs to be primed with water.

Fill the water tank to the **max** fill line (800ml) and turn the pressure dial to the maximum setting.

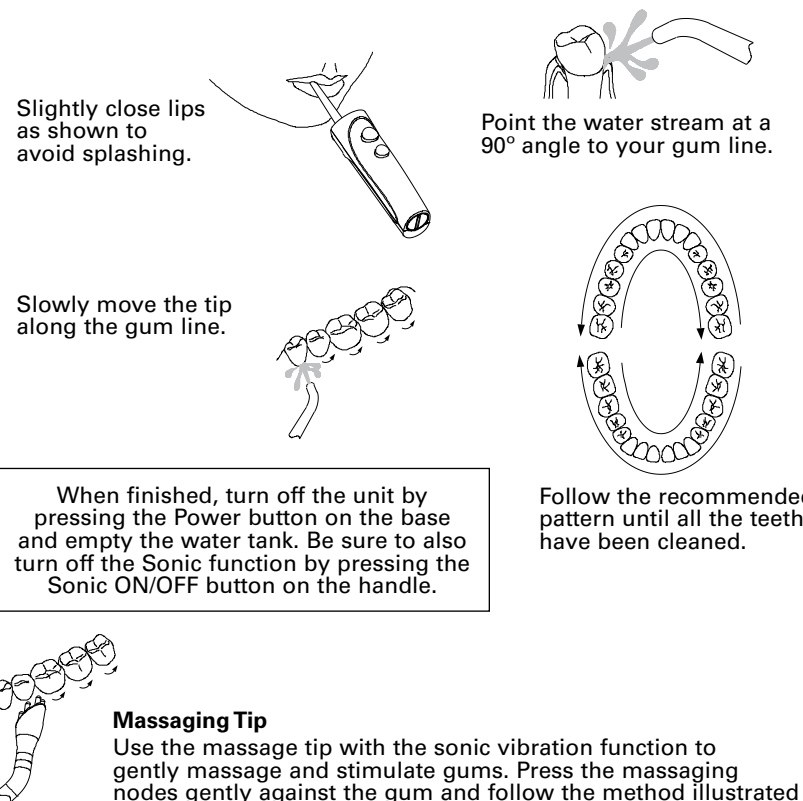
Point the water jet attachment towards the sink and turn the unit on. Within 1 minute, water will begin to flow through the attachment.

Reduce the pressure to the lowest setting (or your desired level) before use.

Using Your Interplak® All-in-One Sonic Water Jet System

1. Adjust the Pressure Control knob to the lowest setting (small dot) for first-time use. With continued use, gradually increase pressure to a comfortable setting, or as instructed by your dentist.
2. Press the Sonic ON/OFF button on the handle (skip this step if you don't want to use the sonic feature).
3. Aim the tip into the sink and press the Power button on the base to start the unit.
4. When water starts to flow, press the Pause button and place tip in mouth following the technique described on page 8.
5. Lean over the sink and release the Pause button. Press Pause again to stop the flow of water.
6. When finished, press the Power button to shut off the unit, and press the Sonic ON/OFF button to turn off the sonic function.

Recommended Technique – Water Jet



Recommended Technique – Sonic Brushing

Insert brush tip into handle. Apply toothpaste.
Insert brush tip into mouth, press Sonic button
and brush your teeth as you normally do.

Rinsing Using Water Stream

Press and hold the Pause button and place brush
in mouth, slightly closing lips to avoid splashing.
Press the Power button, release the Pause button,
and rinse along the gum line as shown.
Slightly close lips as shown to avoid splashing.

Release the Pause button and rinse
as shown along the gum line.

When finished, turn off the unit by pressing the Power button on the base
and empty the water tank. Be sure to also turn off the Sonic function
by pressing the Sonic button on the handle.

Subgingival Tip

Designed for close-in comfort, the rubber tip delivers a
concentrated jet stream of water or antibacterial solution
that reaches deep into periodontal pockets.

Note: This tip is NOT intended for general use, and
MUST be used on low pressure setting only. Place the
soft tip against a tooth and gently place the tip slightly
under the gum line into the pocket. Clean by gently
following the gum line, inserting the tip between teeth.
Do all areas of the mouth.

Orthodontic Cleaning

Using the water jet tip, follow the recommended
technique described on page 7 to clean around
orthodontic brackets one tooth at a time.

Using Mouthwash and Other Solutions

Your Interplak System can be used with mouthwash
or other antibacterial solutions. Ask your dentist to
recommend an appropriate product for you.

Important Note: Use of some solutions can shorten the
life of your unit if it is not cleaned properly. You must
thoroughly rinse out the unit after using any solution.
Fill the tank with warm water to the lowest fill line, then
aim the tip into the sink and run until the tank is empty.

[8]

Instructions for Using Battery

- Always purchase the correct size and grade of battery most suitable
for the intended use.
- Clean the battery contacts and also those of the device prior to
battery installation.
- Ensure the battery is installed correctly with regard to polarity (+ and -).
- Remove battery from equipment that is not to be used for an extended
period of time.
- Remove used battery promptly.

Battery Disposal

When replacing the battery, make sure you dispose of the old battery in
accordance with applicable regulations. It should be disposed of in a location
specifically designated for that purpose so it can be recycled safely and
without posing any risk to the environment. Do not burn or bury it.

Cleaning and Care of Your Interplak® All-in-One Sonic Water Jet System

If the valve on the water tank begins to leak after repeated use, it is simply time
to clean the valve and valve seat. Using a jet tip, push out the valve body –
located inside the bottom of the water tank. Use the tip to clean both valve and
valve seat, then replace the valve.

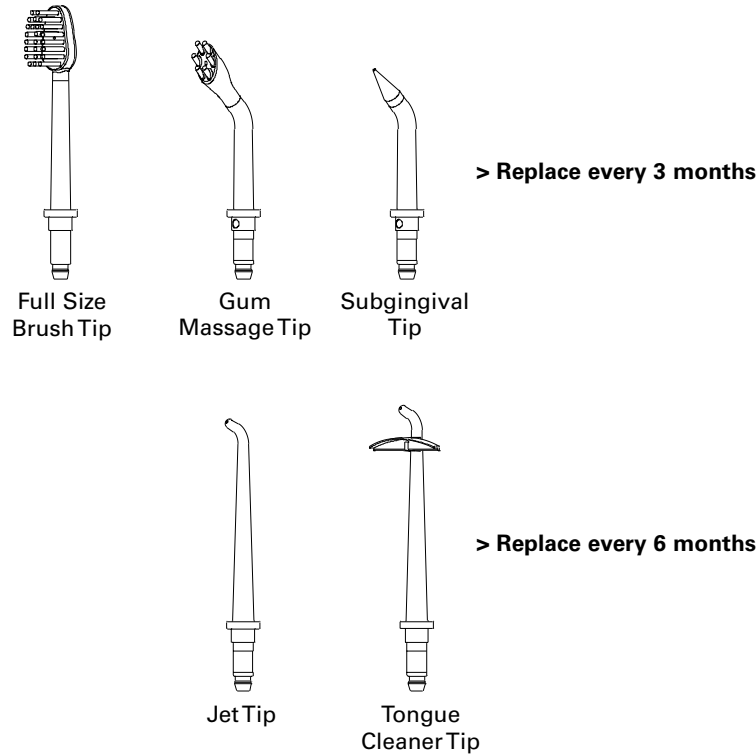
[9]

Troubleshooting Guide

Problem	Cause(s)	Solution(s)
Sonic vibration not working	1. Dead battery 2. Dirty contact 3. Battery cap is loose 4. Sonic ON/OFF button on handle is in OFF position	1. Replace battery 2. Clean contact with cotton swab 3. Turn the battery cap to Closed position 4. Press Sonic OF/OFF button to ON
Tank leaks	The valve and valve seat in water tank need to be cleaned	Follow cleaning and care instructions on page 9
Inadequate pressure	1. Tank is not positioned properly 2. Tip is clogged with debris 3. Pressure control is on low setting	1. Reposition the tank and push down firmly 2. Try a different tip; clean or replace tip that is clogged 3. Adjust pressure control to higher setting
Main unit doesn't start	No power to the unit	Check the outlet and make sure it is functioning; check electrical reset buttons and wall switches
Tip doesn't pull off	Release button located on top of handle	Press release button and pull tip off
Still have questions? Call 1-800-334-4031		

[10]

Recommended Tip Replacement Intervals



To order replacements parts, call 1-800-334-4031

Replacement tips available for \$8.99, including shipping and handling.

Replacement tip pack includes:

- 2 full size brush tips
- 1 gum massage tip
- 1 subgingival tip
- 1 jet tip

[11]

Limited 2-Year Warranty

Conair will repair or replace (at our option) your unit free of charge for 24 months
from the date of purchase if the appliance is defective in workmanship or materials.

To obtain service under this warranty, return the defective product to the service
center listed below, together with your purchase receipt and \$3.00 for postage and
handling.

California residents need only provide proof of purchase and should call
1-800-334-4031 for shipping instructions. In the absence of a purchase receipt,
the warranty period shall be 24 months from the date of manufacture.

**ANY IMPLIED WARRANTIES, OBLIGATIONS, OR LIABILITIES, INCLUDING
BUT NOT LIMITED TO THE IMPLIED WARRANTY OF MERCHANTABILITY AND
FITNESS FOR A PARTICULAR PURPOSE, SHALL BE LIMITED IN DURATION TO
THE 24-MONTH DURATION OF THIS WRITTEN, LIMITED WARRANTY.**

Some states do not allow limitations on how long an implied warranty lasts,
so the above limitation may not apply to you.

**IN NO EVENT SHALL CONAIR BE LIABLE FOR ANY SPECIAL, INCIDENTAL,
OR CONSEQUENTIAL DAMAGES FOR BREACH OF THIS OR ANY OTHER
WARRANTY, EXPRESS OR IMPLIED, WHATSOEVER.** Some states do not allow the
exclusion or limitation of special, incidental, or consequential damages, so the above
limitation may not apply to you.

This warranty gives you specific legal rights, and you may also have other rights,
which vary from state to state.

Service Center:

Conair Corporation
Service Department
7475 N. Glen Harbor Blvd.
Glendale, AZ 85307

Please register this product at: www.conair.com/registration

For more information regarding this and other Interplak® by Conair products,
visit www.interplak.com or call 1-800-334-4031

©2016 Conair Corporation, 150 Milford Road, East Windsor, NJ 08520

16IN025410

IB-14762



Instruction Manual • Model SWJ2

For your safety and continued enjoyment of this product,
always read the instruction book carefully before using.

Questions or Comments? 1-800-334-4031

www.interplak.com